



*"Tasks that used to take us days...can now be done in a few hours."*

Kelly Cone, Innovations Director, Beck Group LLC

## EdgeWise MEP

*Automated Feature Extraction + Full Revit Integration = Substantial Workflow Savings*

For the first time, users can bring extracted pipes, conduit and other cylindrical mechanical, electrical, and plumbing (MEP) elements directly into Autodesk® Revit® as fully functional pipe, conduit or duct Revit families. ClearEdge3D's MEP solution leverages the powerful feature extraction technology of **EdgeWise** to automatically extract pipe solids from laser scan point clouds. **EdgeWise MEP™** dramatically speeds the process of modeling MEP as-builts, offering users time savings of up to 85%.

### Lightning-Fast Workflow

**EdgeWise MEP** has a lightning-fast workflow that allows you to go from field to finished Revit deliverable in record time. Pipes extracted and finished in **EdgeWise** come into Revit as fully functional pipe, conduit or duct Revit families while maintaining key intelligence such as diameter, length and more.



#### Step 1: Import Point Cloud

**EdgeWise** can process numerous formats including: .fls, .ptx, .ptg, .zfs, and .rsp.

#### Step 2: Extract Pipes

Up to 90% of the scene can be extracted automatically — even small pipes.

#### Step 3: Confirm Accuracy

New QA tools to verify accuracy of the extracted pipes to the point cloud.

#### Step 4: Edit & Finish

Fast pipe editing and finishing tools help you complete the model in record time.

#### Step 5: Add Intelligence

New SmartSheet™ technology captures key pipe intelligence in an easy-to-edit worksheet.

#### Step 6: Export Directly to Revit

Our integration with Revit allows you to import the **EdgeWise** pipe model directly into Revit.

*"I honestly don't think we could have completed the project on time and on budget without EdgeWise MEP."*

Ben Bennett, Managing Director, Digital Surveys, Ltd.

## Edgewise MEP

### Full integration with Revit Ensures Complete Compatibility

**EdgeWise MEP** was designed to take the pain out of modeling as-built MEP. Our automated feature extraction technology quickly extracts pipe geometry from point clouds so you spend minimal time tracing pipes. The **EdgeWise** finished pipes can be brought into Revit as fully functional pipe, conduit or duct Revit families.

### New QA Tools Ensure Total Accuracy of Your Model

Our new quality assurance tools allow you to check the accuracy of every extracted pipe to ensure your model is true to the point cloud. Any poorly fitted pipes can be easily and quickly resized and adjusted to the points to give you precise control and accuracy of your model.

### Improved Algorithms Pull Out Nearly Every Pipe – Even the Small Stuff

We've tuned the **EdgeWise** algorithms to extract even more pipes from point clouds

**To arrange a demonstration or request more information, please contact:**  
sales@clearedge3d.com | USA: + 1 866-944-8210

automatically. Now, up to 90% of the scene can be extracted—even small pipes—saving you countless hours in manual modeling.

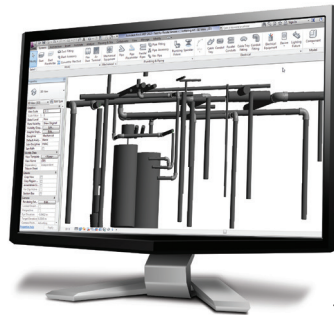
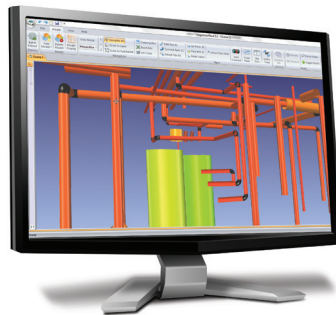
### Fast Finishing Tools for Quick Completion of Occluded Pipes

Occlusions in pipe runs can slow down your workflow and add hours to your modeling project. ClearEdge has created completely new algorithms that can accurately connect occluded regions of pipe, join elbows and move your workflow along in record time. Any missed pipes can be easily extracted from the point cloud using our fast manual extraction tool.

### Gain Competitive Advantage

*"EdgeWise MEP should be in the toolbox of every firm modeling MEP for a Revit deliverable. Anyone not using it is at a severe competitive disadvantage."*

Michael Stys, Director of Technology Solutions  
Bowman Consulting



project. ClearEdge has created completely new algorithms that can accurately connect occluded regions of pipe, join elbows and move your workflow along in record time. Any missed pipes

can be easily extracted from the point cloud using our fast manual extraction tool.

### Gain Competitive Advantage

*"EdgeWise MEP should be in the toolbox of every firm modeling MEP for a Revit deliverable. Anyone not using it is at a severe competitive disadvantage."*

Michael Stys, Director of Technology Solutions  
Bowman Consulting